

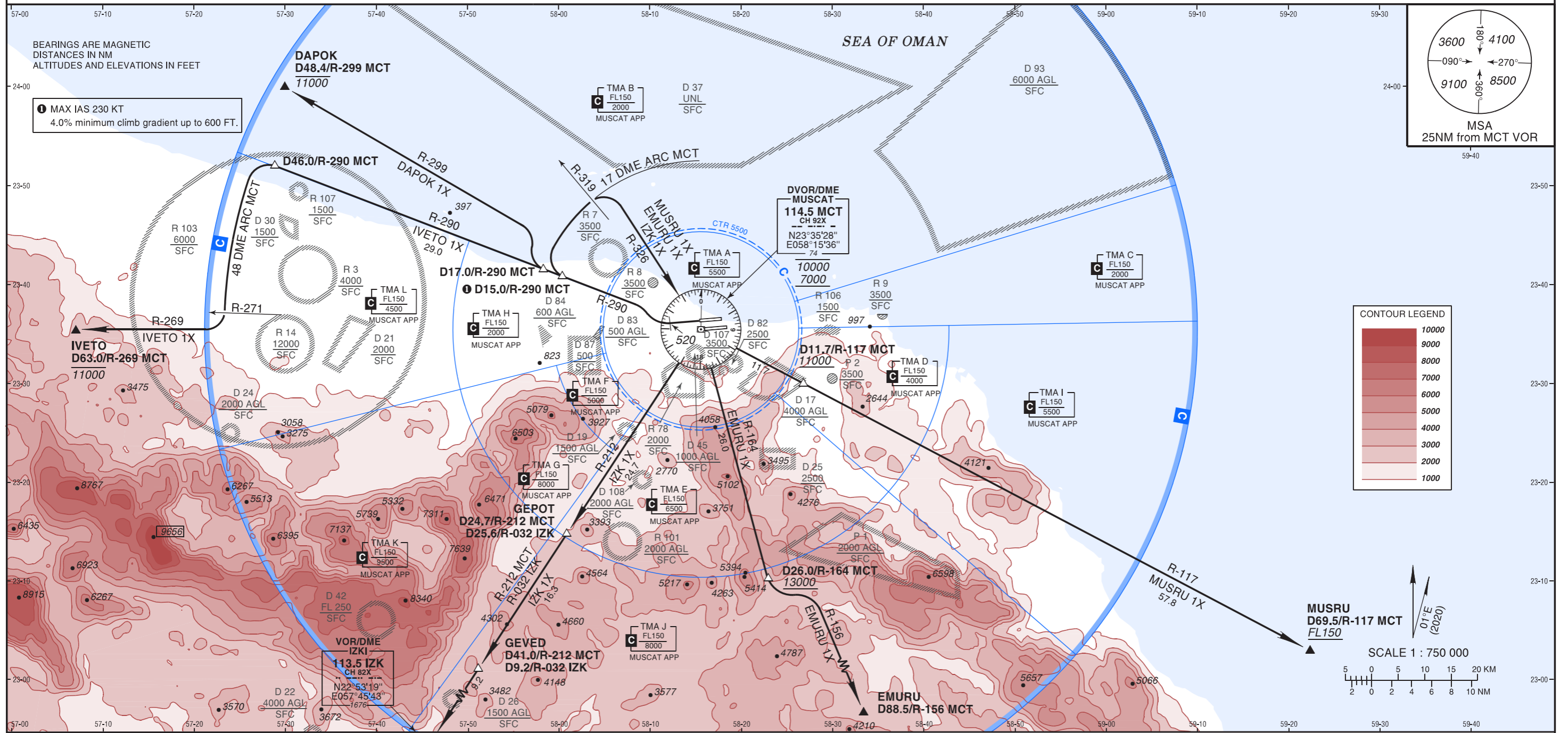
STANDARD DEPARTURE CHART INSTRUMENT (SID) - ICAO

STANDARD DEPARTURE CHART INSTRUMENT (SID) - ICAO
AD ELEV 49 FT
Trans Alt 13000
Trans Level FL150

ATIS 126.800
TWR 118.825
GND 121.800

MUSCAT/Muscat Intl
OMAN
RWY 26R

MUSRU 1X, EMURU 1X, IZK 1X, IVETO 1X, DAPOK 1X DEPARTURE



INITIAL CLIMB

Climb on runway heading to reach 520. Turn RIGHT to intercept and follow R-290 MCT

SID	ROUTING
MUSRU 1X	to D15.0 MCT. Turn RIGHT to follow 17 DME ARC MCT to R-319 MCT. Turn RIGHT to intercept and follow R-326 MCT direct to MCT DVOR/DME between 7000 and 10000. Turn LEFT to follow R-117 MCT to D11.7 MCT at or above 11000. Follow R-117 MCT to MUSRU at or above FL150.
EMURU 1X	to D15.0 MCT. Turn RIGHT to follow 17 DME ARC MCT to R-319 MCT. Turn RIGHT to intercept and follow R-326 MCT direct to MCT DVOR/DME between 7000 and 10000. Turn RIGHT to follow R-164 MCT to D26.0 MCT at or above 13000. Turn LEFT to intercept and follow R-156 MCT direct to EMURU.
IZK 1X	to D15.0 MCT. Turn RIGHT to follow 17 DME ARC MCT to R-319 MCT. Turn RIGHT to intercept and follow R-326 MCT direct to MCT DVOR/DME between 7000 and 10000. Turn RIGHT to follow R-212 MCT direct to GEPOT. Follow R-212 MCT (R-032 IZK) direct to GEVED.
IVETO 1X	to D46.0 MCT. Turn LEFT to follow 48 DME ARC MCT to R-271 MCT. Turn RIGHT to intercept and follow R-269 MCT direct to IVETO at or below 11000.
DAPOK 1X	to D17.0 MCT. Turn RIGHT to intercept and follow R-299 MCT direct to DAPOK at or below 11000.